

T10 4.0W 225 LED FILAMENT

SPECIFICATIONS & TECHNICAL DATA

The 120V EmeryAllen T10 retrofit lamp is an energy efficient alternative to incandescent E26 base lamps. It offers similar light output to a 120V, 40W incandescent (400lm) and is suitable for use in 120V E26 fixtures that have ample room.

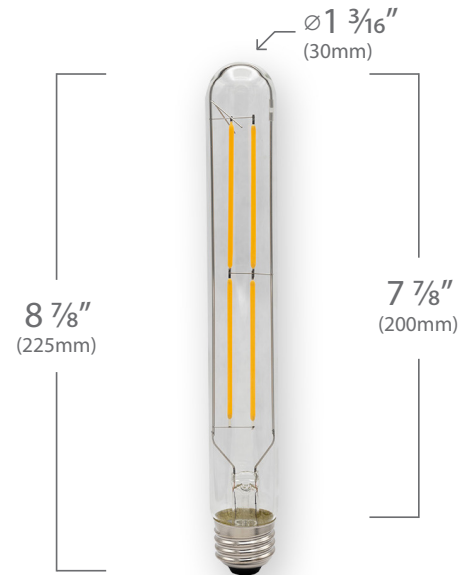
Base Type	E26
Material	Glass + Aluminum
Input Voltage	100-130V AC
Wattage	3.6
Volt-Amperes (VA)	4.5
CRI	94.5
Brightness	385 lumens
Lumens/Watt	106.9
Color Temperature	2700K & 3000K
R9	67
Halogen Equivalent	40W
Beam Angle	360 degrees
Life	15,000 hours
Warranty	Limited Lifetime*

Available Models:

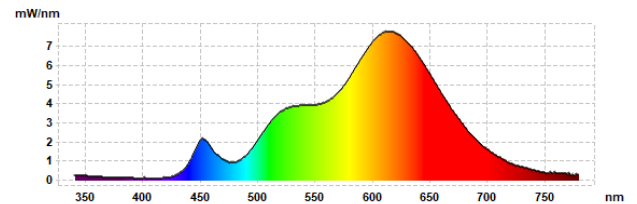
- EA-T10-4.0W-E26-225-2790-D (2700K)
- EA-T10-4.0W-E26-225-3090-D (3000K)

Dimming:

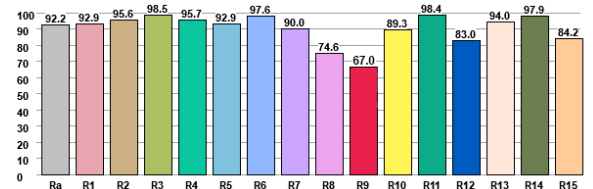
Dimmable with most incandescent and LED dimmers.



SPECTRAL DISTRIBUTION



CRI VALUES R1-R15



TM30 VECTOR

